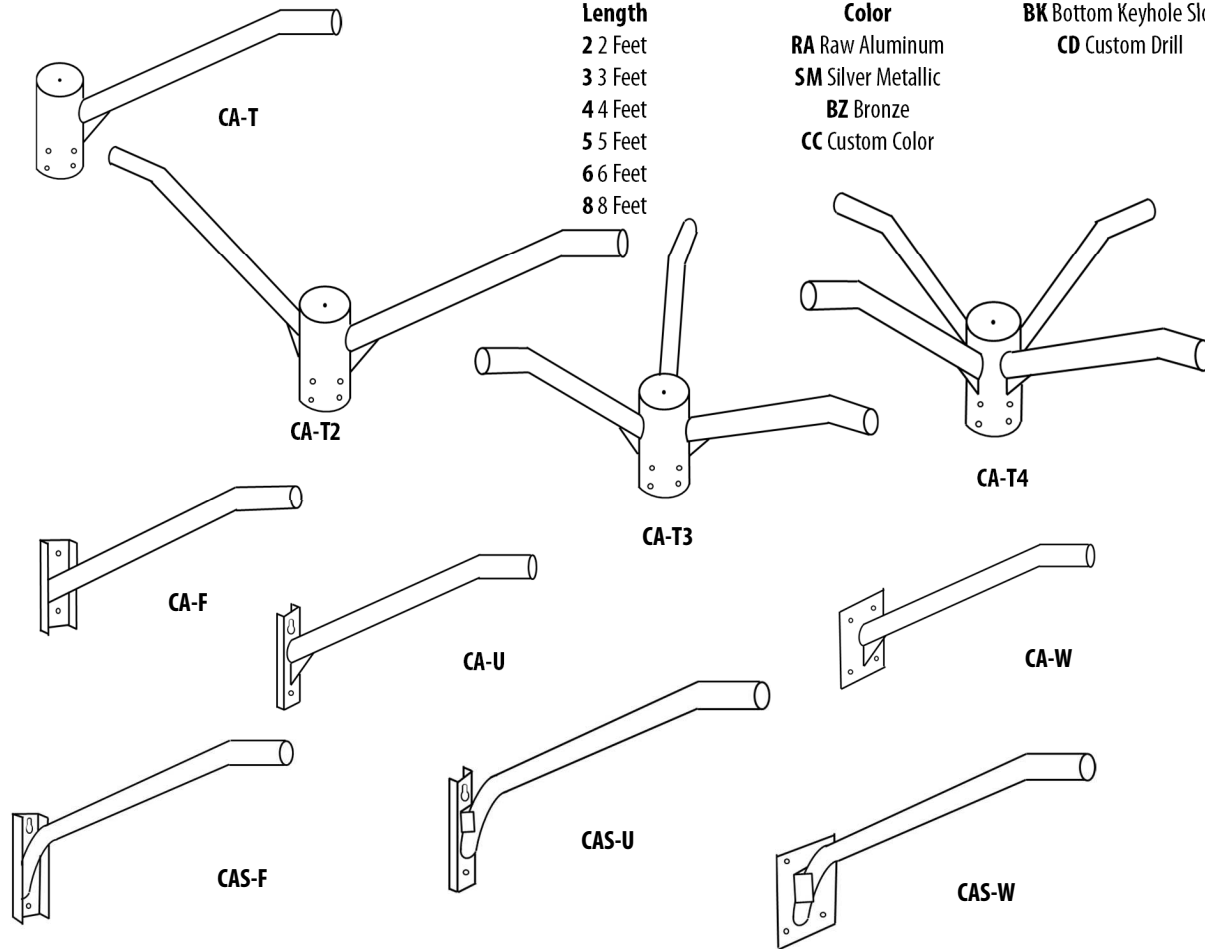


Ordering/Specifying Information

- 2" (2.38" OD) Aluminum Pipe
- Multiple Mounting Options
- Varying Lengths
- Raw Aluminum or Powder Coat Finish
- Mounting Hardware Sold Separately
- Tenon Mount slips over 2.38" OD Tenon
- Optional Tenon Mount Sizes

<div style="border: 1px solid black; width: 40px; height: 20px; margin: 0 auto;"></div> <p>Series CA CAS</p>	<div style="border: 1px solid black; width: 40px; height: 20px; margin: 0 auto;"></div> <p>Mount T Tenon T2 2@180 T3 3@120 T4 4@90 U Universal F Flat Surface W Wall Plate</p>	<div style="border: 1px solid black; width: 40px; height: 20px; margin: 0 auto;"></div> <p>Color RA Raw Aluminum SM Silver Metallic BZ Bronze CC Custom Color</p>	<div style="border: 1px solid black; width: 100px; height: 20px; margin: 0 auto;"></div> <p>Options T3 3" Tenon T3.5 3.5" Tenon T4 4" Tenon T4.5 4.5" Tenon TS Top Slot BS Bottom Slot TK Top Keyhole Slot BK Bottom Keyhole Slot CD Custom Drill</p>
<p>Length 2 2 Feet 3 3 Feet 4 4 Feet 5 5 Feet 6 6 Feet 8 8 Feet</p>			



NOTES

- 1) Welded Aluminum Construction
- 2) Pipe is Circumferentially Welded to Supports
- 3) Angular Supports on Brackets over 36"
- 4) Custom Drills, Slot and Keyholes for F & U Mounts
- 5) U Bracket mounts to Wood, Concrete, & Metal Poles
- 6) U Bracket mounts to Flat or Round Surfaces



PROJECT		SOUTHEAST POLES		
TYPE	QTY	TITLE 2" Cobra Arm Series		
NOTES		DRAWING/FILE SE Pole and Bracket Catalog.xlsx		
APPROVAL		DATE 4/26/2018	SCALE N.T.S.	SHEET 1 OF 1