

S1000MLTAC5M

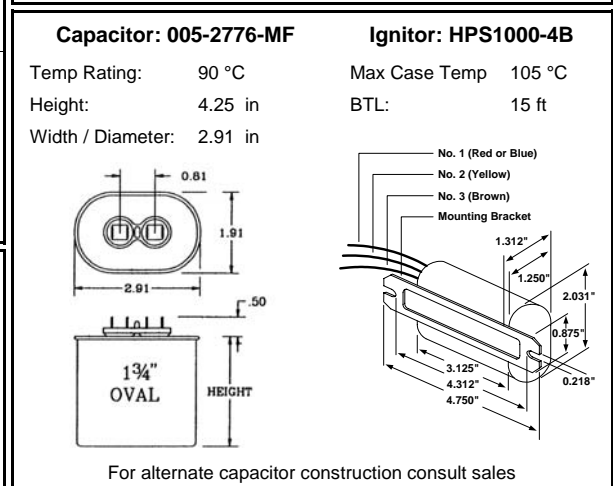
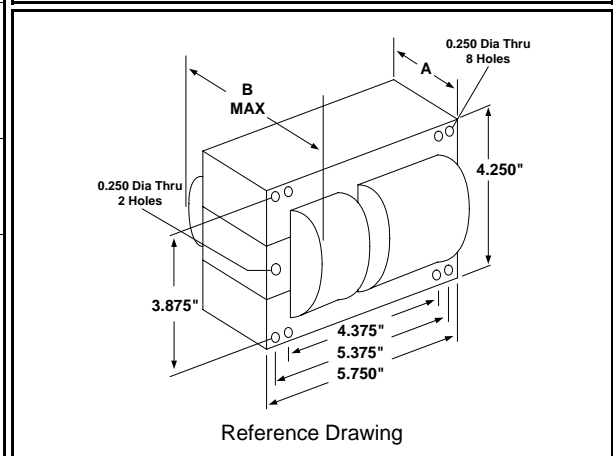
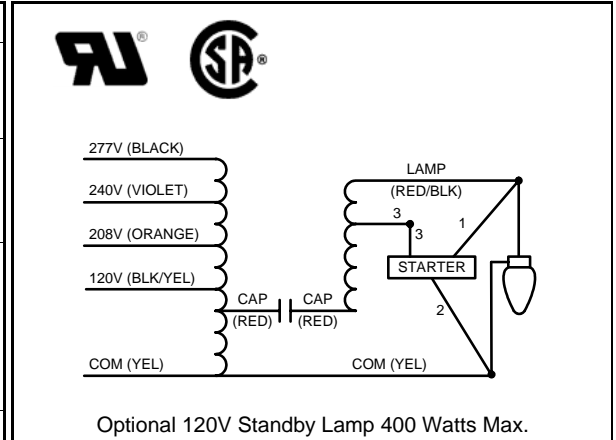
1000W S52

High Pressure Sodium

60Hz CWA

Specification Sheet

Input Volts	120	208	240	277
Regulation				
Line Volts	±10%	±10%	±10%	±10%
Lamp Watts	±10%	±10%	±10%	±10%
Power Factor (min)	90%	90%	90%	90%
Input Watts	1100 W	1100 W	1100 W	1100 W
NOM. Open Circuit Voltage	440 V	440 V	440 V	440 V
Line Current (Amps)				
Operating	9.50	5.50	4.80	4.20
Open Circuit	6.10	3.50	3.10	2.70
Starting	5.00	3.00	2.60	2.20
Recommended Fuse (Amps)	24	15	12	12
Lamp Dropout Voltage (Line)	90 V	155 V	180 V	205 V
UL Temperature Ratings				
Insulation Class	H (180°C)	H (180°C)	H (180°C)	H (180°C)
Temperature Code	C	C	C	C
MIN. Starting Temperature	-40°F -40°C	-40°F -40°C	-40°F -40°C	-40°F -40°C
CAPACITOR Specifications				
Microfarads	26 uf	26 uf	26 uf	26 uf
Volts (min.)	525 V	525 V	525 V	525 V
60Hz Test Procedures				
High Potential Test 1 Minute	2000 V	2000 V	2000 V	2000 V
High Potential Test 1 Second	2500 V	2500 V	2500 V	2500 V
Secondary Open Ckt Voltage (V)	400 - 485	400 - 485	400 - 485	400 - 485
Secondary Current Shorted (A)	6.40 - 8.00	6.40 - 8.00	6.40 - 8.00	6.40 - 8.00
Input Operating Current (A)	8.65 - 10.55	5.00 - 6.15	4.35 - 5.30	3.80 - 4.70
Input Open Circuit Current (A)	3.00 - 8.75	1.75 - 5.00	1.50 - 4.40	1.35 - 3.90
Input Short Circuit Current (A)	5.30 - 8.00	3.10 - 4.70	2.65 - 4.00	2.30 - 3.50
Core and Coil Specifications				
Dimension A	3.80 in	3.80 in	3.80 in	3.80 in
Dimension B	5.70 in	5.70 in	5.70 in	5.70 in
Weight	26 lbs	26 lbs	26 lbs	26 lbs
Lead Lengths (inches)	12-14	12-14	12-14	12-14
Coil Material (Pri. / Sec.):	Cu / Cu	Cu / Cu	Cu / Cu	Cu / Cu



Document #:	010-9752-03
Date:	6/14/2011
Status:	Production
Replaces Catalog #:	1230-97S

Data is based upon tests performed by Universal Lighting Technologies in a controlled environment and is representative of relative performance. Actual performance may vary depending on operating conditions. Specifications are subject to change without notice.