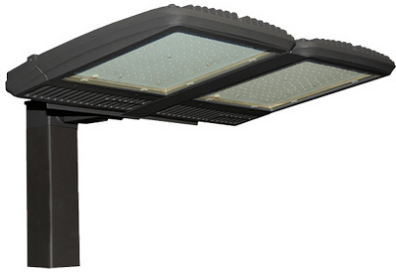


ARXL Amber LED Series

Aero Ray Extra Large LED Parking and Area Amber



ARXL Amber LED Series

SPECIFICATIONS

- Die Cast Aluminum Housing and Front Frame
- Tempered Clear Flat Glass Lens
- Bronze Powder Coat Finish, Optional Custom Color
- CRI LED Aluminum Substrate Board
- Universal Volt LED Driver 120-277V, Optional 480V
- Monochromatic Amber LED Light
- Turtle Friendly, LED's Operates Between 585 Nanometers and 595 Nanometers
- Integral Heat Sinking
- Stainless Steel Hardware
- Optional Surge Protection
- Optional Dimming
- Optional Sensing Control for Bi-Level Operation
- Optional House Side Shield
- Optional Wire Guard

APPLICATIONS

- General Area/Pathway Lighting
- Entries, Walkways, Roadway, Area
- Schools, Hospitals, Office, Commercial Buildings

ELECTRICAL

- 120-277V 50/60Hz
- Optional 480V 50/60Hz
- 334 Watts

INSTALLATION

- Mounts with a Slip Fitter, Installed at Factory

CERTIFICATIONS/LISTINGS

- CSA Listed
- IP66
- Listed for Wet Locations

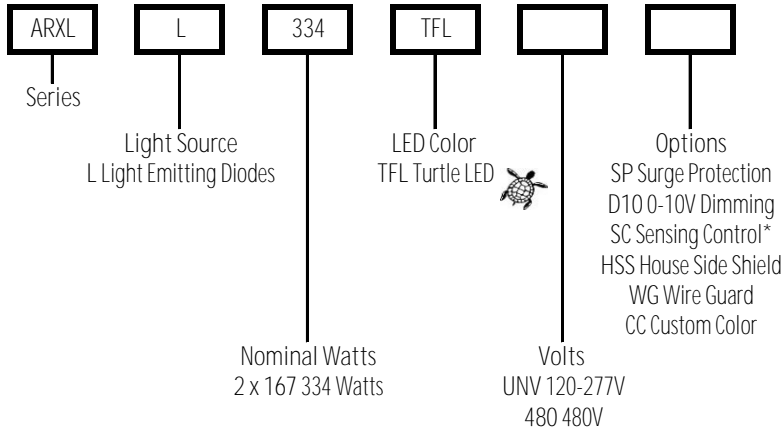


PROJECT _____ TYPE _____

QTY _____ NOTES _____ APPROVAL _____

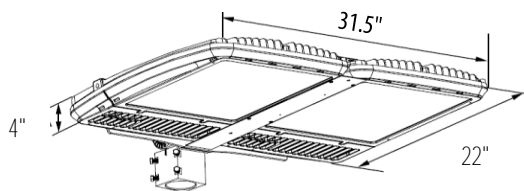
ORDERING/SPECIFYING INFORMATION:

EXAMPLE: ARXL L 2 x 167 TFL UNV



*Up to 35' Mounting

SPECIFICATIONS



OPTIONS/ACCESSORIES



Specifications Subject to Change

